

# WH 8500

Spheroidal graphite cast iron structure

Ratio 30:1 - Reduction unit with worm wheel and irreversible worm-screw.

Reverse motion is possible only when the operator acts on the relevant controls, therefore no brake is required.

Manual clutch for drum engagement – disengagement

Towing capacity: 25500 kg at the 1<sup>st</sup> rope layer

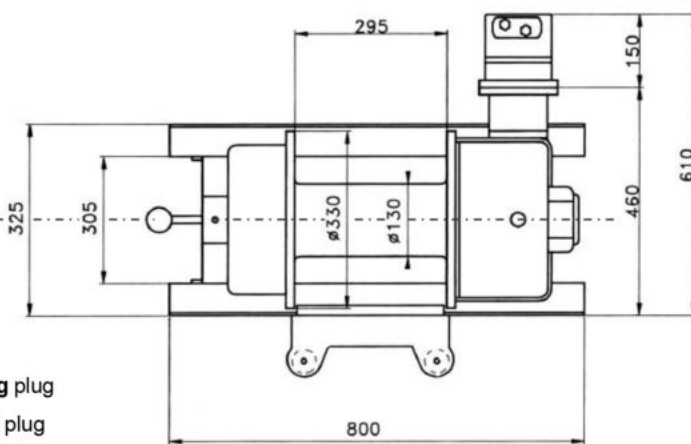
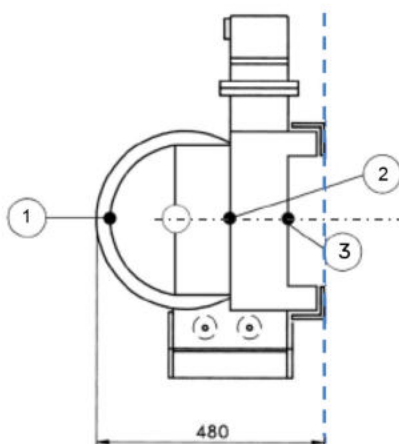
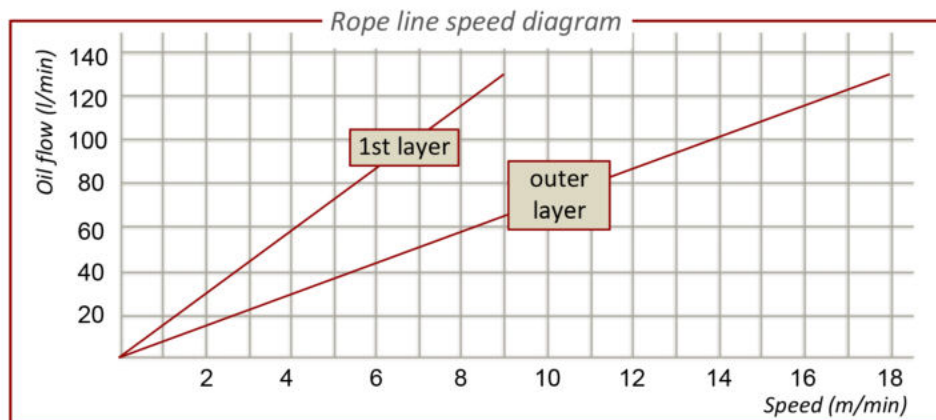
Direct line pull force (as measured by spring scale gauge): 8500 kg at the 1<sup>st</sup> rope layer

Zinc-plated steel fairlead rollers

Recommended rope length (sold as option):  $\varnothing 16$  mm - max. rope length capacity: 70 m

Total weight w/out rope: 217 kg

Max P (relief valve adj.):  
200 bar  
Suggested flow to motor:  
90-100 l/min



- ① Oil filling plug
- ② Oil level plug
- ③ Oil drain plug

ROPE LAYER	TOWING CAPACITY*	DIRECT LINE PULL	ROPE LENGTH
1 <sup>st</sup>	25500 kg	8500 kg	7,5 m
2 <sup>nd</sup>	20460 kg	6820 kg	16,8 m
3 <sup>rd</sup>	17100 kg	5700 kg	28,0 m
4 <sup>th</sup>	14700 kg	4900 kg	41,0 m
5 <sup>th</sup>	12900 kg	4300 kg	55,9 m
6 <sup>th</sup>	11400 kg	3800 kg	72,6 m

Max rope capacity 70m  $\varnothing 16$ mm

\* Pulling capacity (estimated weight of the vehicle to be towed on a flat surface, free wheels) uses to be about 3 times as the direct line pull as measured by spring scale.